

WARN INDUSTRIAL HOIST

WINCH MODEL

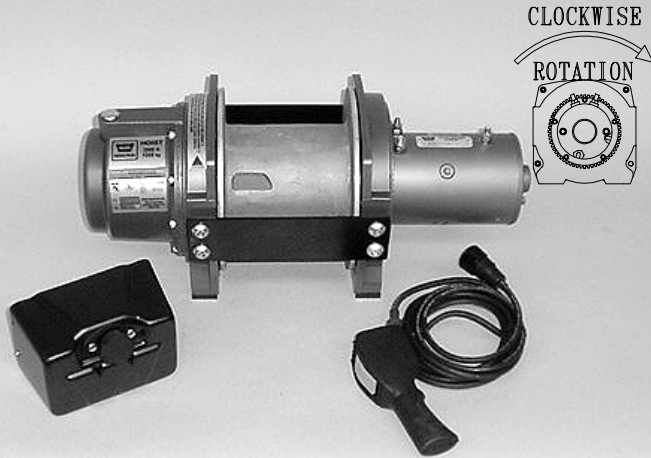
DC3000

PART NUMBER

PN 36945

TYPE

12V ELECTRIC



05/21/02

The DC 3000 features a special 199:1 3-stage planetary gear reduction. The weather-proof industrial contactor with 12' remote provides dynamic braking for secure load control. The cable to drum ratio is 18:1 with 5/16" wire rope. Designed to meet ANSI B30.5 standard

ENGINEERING DATA:

- **Maximum rated load :** 3000 lbs (1364kg)
- **Maximum wire rope recommended:** 5/16" 9800 lbs (4455kg) minimum breaking strength
- **Drum barrel diameter:** 5.31" (135 mm)
- **Drum flange diameter:** 8.90" (226 mm)
- **Distance between flanges:** 5.94" (151 mm)
- **Contactor:** Industrial contactor with 12' (3.7 M) heavy duty remote control
- **Approximate shipping weight:** 83 lbs (38 kg)
- **Gear ratio:** 199:1
- **Motor:** 12 volt DC series wound 2.5 hp (1.87KW)

STANDARDS COMPLIANCE:

- ANSI B30.5

PERFORMANCE DATA:

LAYER	LINE LOAD		LINE SPEED		5/16" WIRE ROPE CAPACITY	
	lb.	kg	ft/min.	m/min.	ft.	meters
1	3000	1364	11	3.4	25	7.6
2	2700	1227	13	3.8	54	16.5
3	2455	1116	14	4.2	85	25.9
4	2250	1023	15	4.6	119	36.3
1 st LAYER	LINE LOAD		LINE SPEED		amps	DUTY CYCLE
	lb.	kg	ft/min.	m/min.		min/10 min
	0	0	28	8.5	95	3.1
	1000	455	17	5.2	165	2.6
	2000	909	13	4.0	215	2.0
3000	1364	11	3.4	255	1.7	

AVAILABLE ACCESSORIES:

- OverLoad Interrupt pn 61929

WARN INDUSTRIES, INC. INDUSTRIAL PRODUCTS

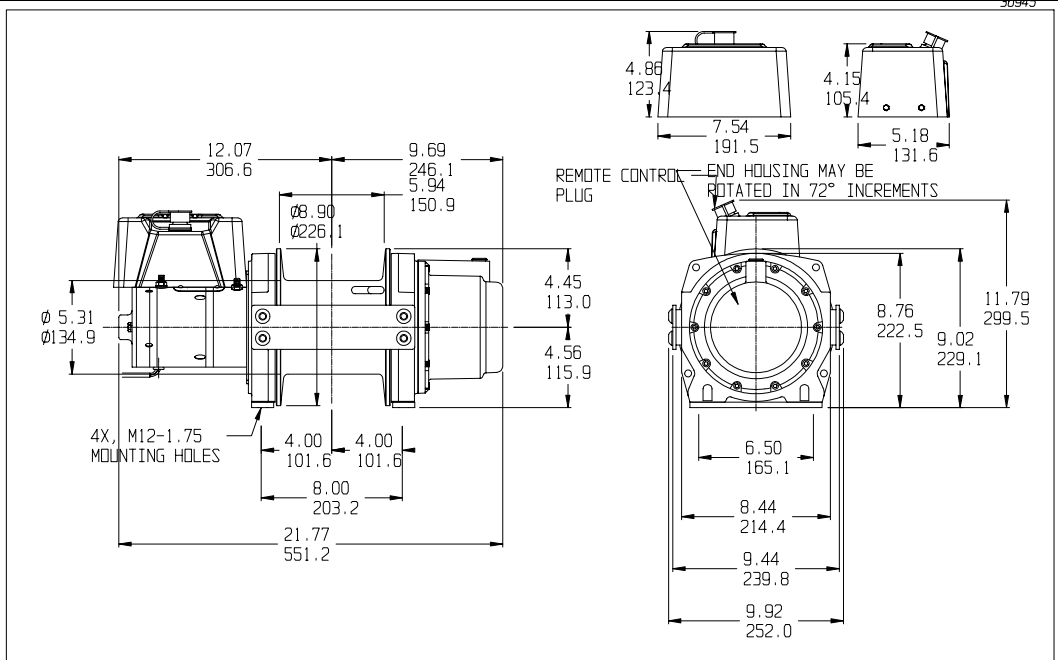
12900 S.E. Capps Road, Clackamas, OR USA 97015-8903
 Customer Service (in North America): 1.800.543.9276
 Customer Service (international): 1.503.722.3008
 Fax:1.503.722.3000 www.warn.com



WARN INDUSTRIAL HOIST

WINCH MODEL	PART NUMBER	TYPE
DC 3000	PN 36945	12V ELECTRIC

DIMENSIONAL DATA



REPLACEMENT PARTS

