

**WARN INDUSTRIAL HOIST**

WINCH MODEL

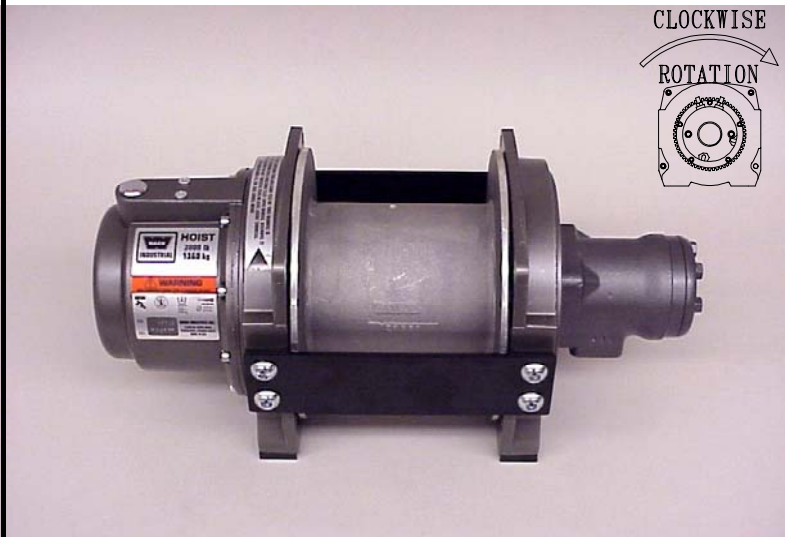
PART NUMBER

TYPE

**HY3000**

PN 36949

**HYDRAULIC 3.0 cu in**



07/16/02

The HY 3000 features a 2-stage planetary gear train with a total reduction of 21:1. It has a heavy duty disc brake for positive load control. The cable to drum ratio is 18:1 with 5/16" wire rope. Designed to meet ANSI B30.5 standard

**ENGINEERING DATA:**

**STANDARDS COMPLIANCE:**

- **Maximum rated load :** 3000 lbs (1364kg)
- **Maximum wire rope recommended:** 5/16" 9800 lbs (4455kg) minimum breaking strength
- **Maximum input flow:** 16 USGPM (60 L/MIN)
- **Drum barrel diameter:** 5.31" (135 mm)
- **Drum flange diameter:** 8.90" (226 mm)
- **Distance between flanges:** 5.94" (151 mm)
- **Hydraulic Motor:** 3.0 cu in (49.2 cc)
- **Gear ratio:** 21:1
- **Approximate shipping weight:** 68 lbs ( 31 kg )

- ANSI B30.5

**PERFORMANCE DATA:**

**AVAILABLE ACCESSORIES:**

LAYER	LINE LOAD		LINE SPEED at 5 GPM (19 l/min.)		5/16" WIRE ROPE CAPACITY*	
	lb.	kg	ft/m in.	m/m in.	ft.	meters
1	3000	1364	30	9.1	25	7.6
2	2700	1227	34	10.4	54	16.5
3	2455	1116	37	11.3	85	25.9
4	2250	1023	41	12.5	119	36.3
1 st LAYER	LINE LOAD		PRESSURE DROP			
	lb.	kg	psi	bar		
	0	0	95	7		
	1000	455	590	41		
	2000	909	1060	73		
	3000	1364	1540	106		

**WARN INDUSTRIES, INC. INDUSTRIAL PRODUCTS**

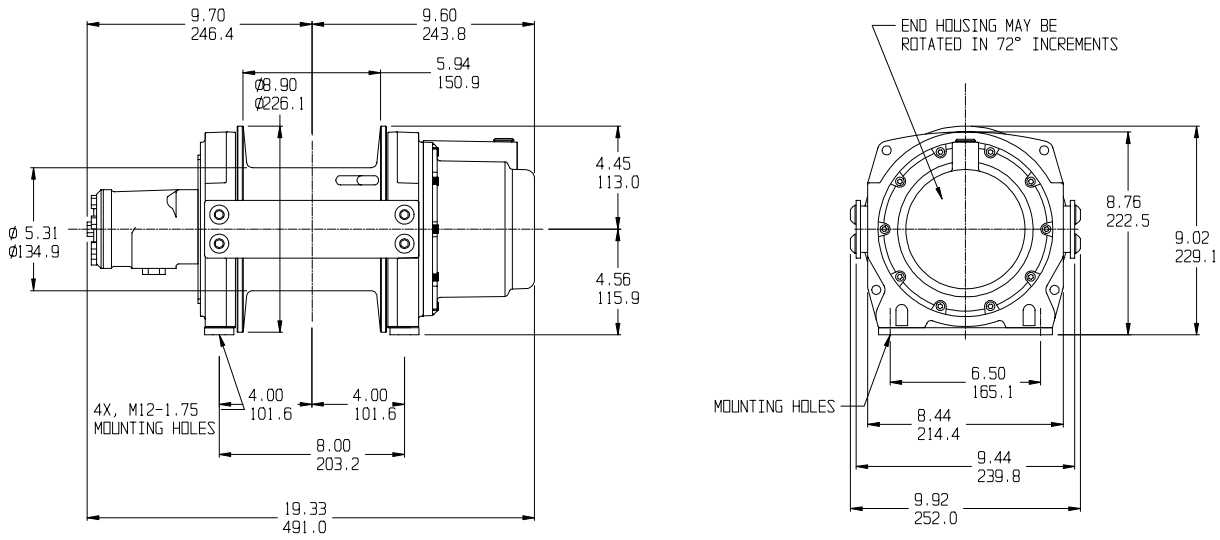
12900 S.E. Capps Road, Clackamas, OR USA 97015-8903  
 Customer Service (in North America): 1.800.543.9276  
 Customer Service (international): 1.503.722.3008  
 Fax:1.503.722.3000 www.warn.com



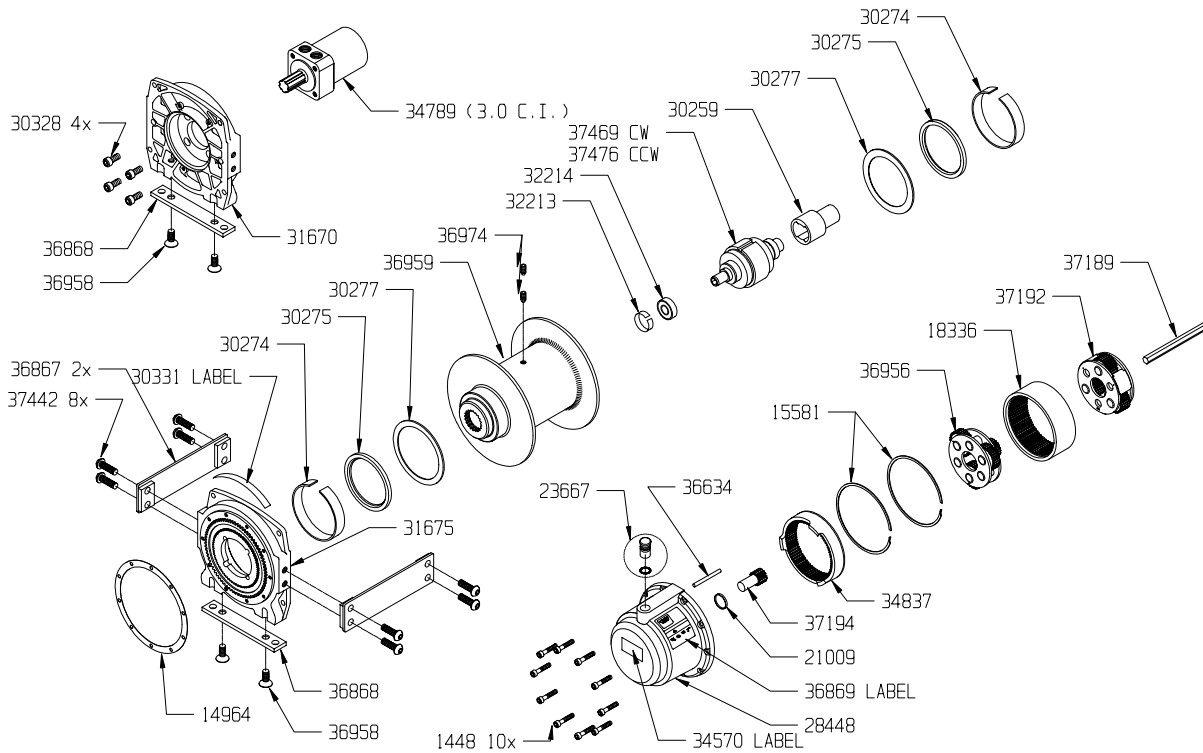
# WARN INDUSTRIAL HOIST

WINCH MODEL	PART NUMBER	TYPE
<b>HY3000</b>	<b>PN 36949</b>	<b>HYDRAULIC 3.0 cu in</b>

## DIMENSIONAL DATA



## REPLACEMENT PARTS



## WARN INDUSTRIES, INC. INDUSTRIAL PRODUCTS

12900 S.E. Capps Road, Clackamas, OR USA 97015-8903  
 Customer Service (in North America): 1.800.543.9276  
 Customer Service (international): 1.503.722.3008  
 Fax: 1.503.722.3000 www.warn.com



