

# WARN INDUSTRIAL HOIST

WINCH MODEL

**DC2000**

PART NUMBER

PN 63650

TYPE

**12V ELECTRIC**



02/18/03

This DC2000 features a compact frame for mounting flexibility and light weight. A heavy duty permanent magnet motor combined with a deep 261:1 gear ration results in precise position control.

**ENGINEERING DATA:**

- **Maximum rated load :** 2000 lbs (907kg)
- **Maximum wire rope recommended:** 1/4" 7000 lbs (3182kg) minimum breaking strength
- **Drum barrel diameter:** 4.25" (108 mm)
- **Drum flange diameter:** 6.25" (159 mm)
- **Distance between flanges:** 4.5" (114 mm)
- **Contactora:** Industrial contactor with 12' ( 3.7 M) heavy duty remote control
- **Approximate shipping weight:** 40 lbs ( 18 kg )
- **Gear ratio:** 261:1
- **Motor:** 12 volt DC permanent magnet 1.8 hp (1.34KW)

**STANDARDS COMPLIANCE:**

- ANSI B30.5

**PERFORMANCE DATA:**

LAYER	LINE LOAD		LINE SPEED		1/4" (6mm) WIRE ROPE CAPACITY	
	lb.	kg	ft/min.	m/min.	ft.	meters
1	2000	909	13.7	4.2	20	6.1
2	1800	818	15.1	4.6	43	13.1
1 st LAYER	LINE LOAD		LINE SPEED		DUTY CYCLE	
	lb.	kg	ft/min.	m/min.	amps	min/10 min
	0	0	17.4	5.3	25	6.0
	1000	455	15.7	4.8	74	4.0
	1500	682	14.6	4.4	102	2.8
	2000	909	13.7	4.2	130	1.5

**AVAILABLE ACCESSORIES:**

- OverLoad Interrupt - pn 61929
- CE Remote Control

**WARN INDUSTRIES, INC. INDUSTRIAL PRODUCTS**

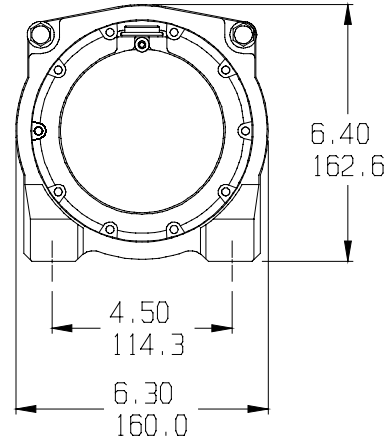
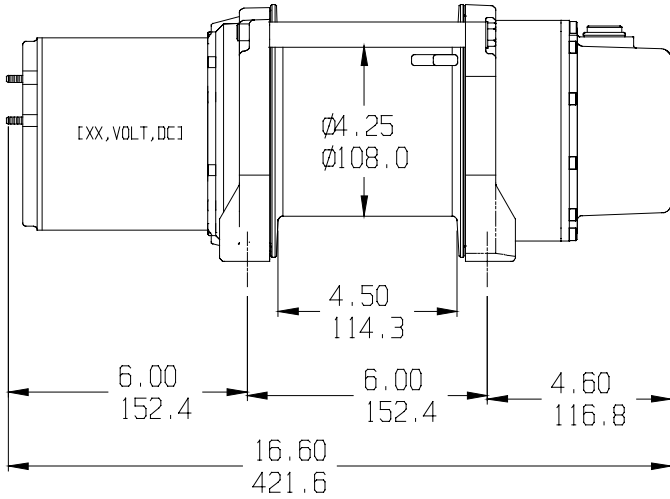
12900 S.E. Capps Road, Clackamas, OR USA 97015-8903  
 Customer Service (in North America): 1.800.543.9276  
 Customer Service (international): 1.503.722.3008  
 Fax:1.503.722.3000 www.warn.com



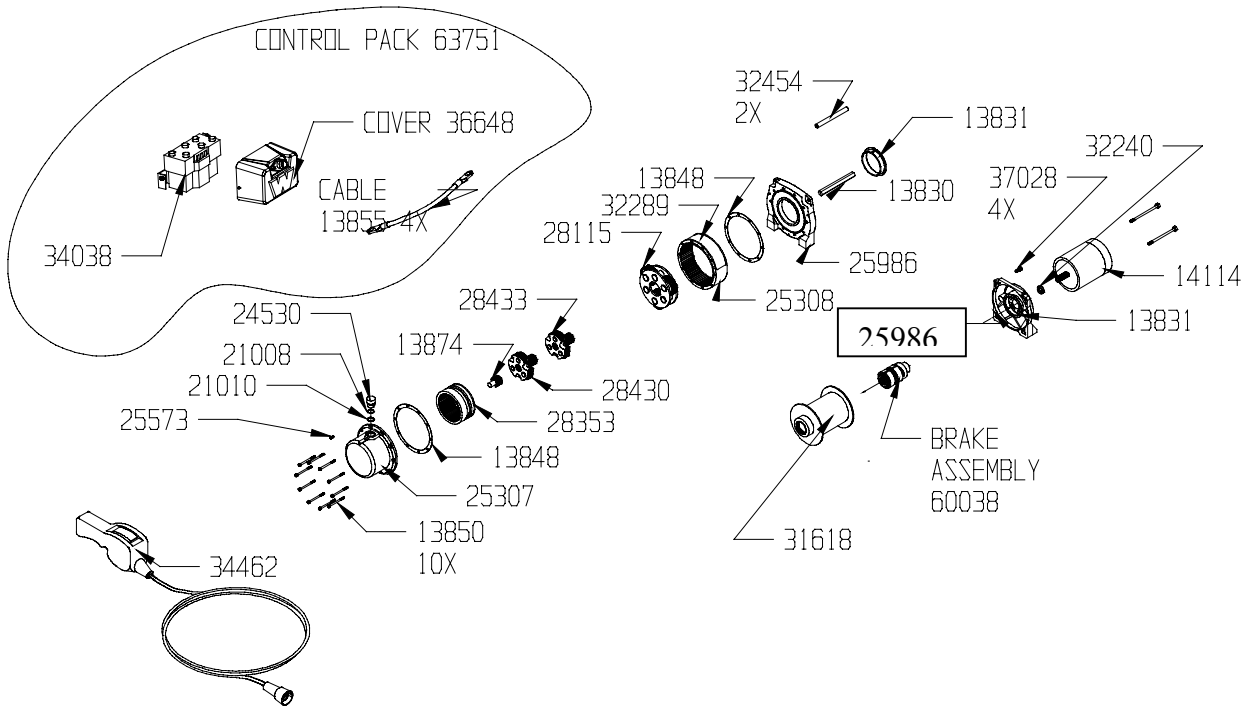
# WARN INDUSTRIAL HOIST

WINCH MODEL	PART NUMBER	TYPE
<b>DC2000</b>	PN 63650	<b>12V ELECTRIC</b>

## DIMENSIONAL DATA



## REPLACEMENT PARTS



## WARN INDUSTRIES, INC. INDUSTRIAL PRODUCTS

12900 S.E. Capps Road, Clackamas, OR USA 97015-8903  
 Customer Service (in North America): 1.800.543.9276  
 Customer Service (international): 1.503.722.3008  
 Fax: 1.503.722.3000 www.warn.com



